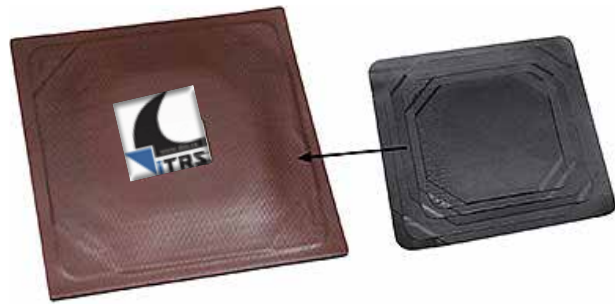




## ITRS UNCURED BIAS REPAIR

The OTR repair unit have solid ply construction and still very flexible.  
Die-cut edges distribute the cord-end stresses across a radiused area, preventing lifting of the cord edges.



### OTR BIAS REPAIR UNITS

UNCURED	DESCRIPTION	SIZE - INCHES / (MM)	WEIGHT/BOX	QTY/BOX
20-104	OTR4 BIAS	6" x 6" (152x152)	6.9 LBS / 3.14 KG	10
20-106	OTR6 BIAS	8" x 8" (203x203)	9.2 LBS / 4.18 KG	10
20-108	OTR8 BIAS	10" x 10" (254x254)	16 LBS / 7.20 KG	10
20-110	OTR10 BIAS	12" x 12" (305x305)	13 LBS / 5.80 KG	5
20-112	OTR12 BIAS	14" x 14" (356x356)	18 LBS / 8.00 KG	5
20-114	OTR14 BIAS	16" x 16" (406x406)	25 LBS / 11.3 KG	5
20-116	OTR16 BIAS	18" x 18" (457x457)	13 LBS / 5.80 KG	2
20-118	OTR18 BIAS	20" x 20" (508x508)	14 LBS / 6.30 KG	1
20-120	OTR20 BIAS	24" x 24" (610x610)	15 LBS / 6.80 KG	1

### SKIDDER REPAIR UNITS

The designed repair unit for farm and skidder tires.  
The plies are aligned specifically to allow for the twisting movement of this high flex tire design.

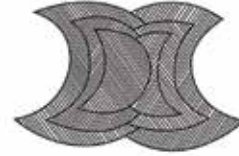
UNCURED	CLOTHBACK	HEAT CURE	DESCRIPTION	SIZE - INCHES / (MM)	QTY/BOX
20-201	21-201	23-201	SK-1 SKIDDER REPAIR 4 PLY	9" x 12" (229x305)	5
20-202	21-202	23-202	SK-2 SKIDDER REPAIR 4 PLY	11" x 15" (279x381)	5
20-203	21-203	23-203	SK-3 SKIDDER REPAIR 4 PLY	12" x 17" (305x432)	5
20-204	21-204	23-204	SK-4 SKIDDER REPAIR 4 PLY	13" x 19" (330x483)	5
20-205	21-205	23-205	SK-5 SKIDDER REPAIR 6 PLY	9" x 12" (229x305)	5
20-206	21-206	23-206	SK-6 SKIDDER REPAIR 6 PLY	11" x 15" (279x381)	5
20-207	21-207	23-207	SK-7 SKIDDER REPAIR 6 PLY	12" x 17" (305x432)	5
20-208	21-208	23-208	SK-8 SKIDDER REPAIR 6 PLY	13" x 19" (330x483)	5
20-209	21-209	23-209	SK-9 SKIDDER REPAIR 8 PLY	11" x 15" (279x381)	5
20-210	21-210	23-210	SK-10 SKIDDER REPAIR 10 PLY	11" x 15" (279x381)	5
20-211	21-211	23-211	SK-11 SKIDDER REPAIR 10 PLY	12" x 17" (305x432)	5
20-212	21-212	23-212	SK-12 SKIDDER REPAIR 10 PLY	13" x 19" (330x483)	5



# ITRS UNCURED BIAS REPAIR

## BIAS SIDEWALL (BUTTERFLY) REPAIR UNITS

For sidewall reinforcement or section repair in giant bias ply tires. The construction provides a strong and flexible unit that can be applied parallel or perpendicular to the bead as dictated by the unjury location.

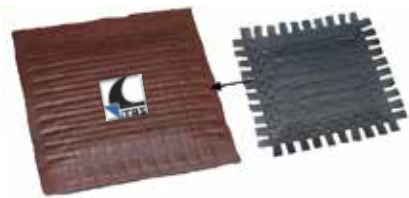


UNCURED	DESCRIPTION	SIZE - INCHES / (MM)	QTY/BOX
20-312	BSW1 BIAS SIDEWALL REPAIR	9" x 12" (229x305)	5
20-315	BSW2 BIAS SIDEWALL REPAIR	11" x 15" ( 279x381)	5
20-316	BSW3 BIAS SIDEWALL REPAIR	11" x 15" (279x381)	5
20-317	BSW4 BIAS SIDEWALL REPAIR	12" x 17" ( 305x432)	5
20-318	BSW5 BIAS SIDEWALL REPAIR	13" x 19" (330x483)	5



## UNDERTREAD BIAS REPAIR UNITS

UNCURED	DESCRIPTION	SIZE - INCHES / (MM)	QTY/BOX
20-164	BIAS REPAIR 4 PLY	6" x 6" (152x152)	10
20-184	BIAS REPAIR 4 PLY	8" x 8" (203x203)	10
20-106	BIAS REPAIR 6 PLY	10" x 10" (254x254)	10
20-128	BIAS REPAIR 8 PLY	12" x 12" (305x305)	5
20-141	BIAS REPAIR 10 PLY	14" x 14" (356x356)	5



## OTR BASKET BIAS REPAIR UNITS

The OTR-B unit is carefully engineered and constructed to create maximum flexibility. The ply strips are positioned in a basket weave pattern creating the strength and flexibility needed for reinforcement or section repair. For sidewall reinforcement or section repair in giant bias ply tires.

UNCURED	CLOTHBACK	HEAT CURE	DESCRIPTION	SIZE - INCHES / (MM)	QTY/BOX
20-904	21-904	23-904	OTR4-B BIAS	7 1/2" x 7 1/2" (190x190)	10
20-906	21-906	23-906	OTR6-B BIAS	9 3/4" x 9 3/4" (245x245) (203x203)	10
20-908	21-908	23-908	OTR8-B BIAS	12 1/4" x 12 1/4" (310x310)	10
20-910	21-910	23-910	OTR10-B BIAS	14 1/4" x 14 1/4" (360x360)	5
20-912	21-912	23-912	OTR12-B BIAS	16 1/4" x 16 1/4" (410x410)	5
20-914	21-914	23-914	OTR14-B BIAS	18 1/4" x 18 1/4" (465x465)	5
20-916	21-916	23-916	OTR16-B BIAS	20 1/4" x 20 1/4" (515x515)	2
20-918	21-918	23-918	OTR18-B BIAS	22 3/4" x 22 3/4" (575x575)	1
20-920	21-920	23-920	OTR20-B BIAS	26 3/4" x 26 3/4" (680x680)	1



## ITRS RADIAL UNCURED REPAIR

### ITRS RADIAL REPAIR UNITS

The innovative new rubber compound combined with a strong fabric produces a patch which is stronger, more flexible and very durable.  
**Recommend for OTR REPAIR.**

These repair units are designed for use in section repairs in RADIAL OTR TIRES. They are intended for use in heat cure systems (Autoclaves, Section Molds, Molds or Strap Type Curing Systems).

Their "center over injury" design makes them a very convenient and easy type of repair. Used with uncured black floater gum, they provide added adhesion strength in all types of repairs.

Shelf Life: 1 Year from Date of Manufacture.



UNCURED	CLOTHBACK	HEAT CURE	DESCRIPTION	SIZE - INCHES / (MM)	WEIGHT/BOX	QTY/BOX
20-040	21-040	23-040	ITRS RS84	4" x 8" (102x203)	2.2 LBS / 1 KG	10
20-042	21-042	23-042	ITRS RS105	5" x 10" (127x254)	4.6 LBS / 2.09 KG	10
20-044	21-044	23-044	ITRS RS135	5" x 13" (127x330)	6.2 LBS / 2.82 KG	10
20-046	21-046	23-046	ITRS RS165	5" x 16" (127x405)	3.7 LBS / 1.68 KG	5
20-047	21-047	23-047	ITRS RS176	6" x 17" (152x432)	4.5 LBS / 2.05 KG	5
20-050	21-050	23-050	ITRS RS228	7-1/2" x 22" (190x560)	7.2 LBS / 3.27 KG	5
20-052	21-052	23-052	ITRS RS2210	9-1/2" x 22" (240x560)	3.7 LBS / 3.27 KG	2
20-056	21-056	23-056	ITRS RS2811	10-1/2" x 28" (265x710)	4.8 LBS / 2.18 KG	2
20-060	21-060	23-060	ITRS RS3811	11" x 38" (265x965)	6.2 LBS / 2.82 KG	2

### ITRS-B BASKET RADIAL REPAIR UNITS

These repairs are designed to give the needed flexibility an extra support for shoulder and sidewall injuries of RADIAL OTR TIRES.

They are handmade using the newest technology and provide the ability to repair larger injuries than standard radial "center over the injury" repair units.

Shelf Life: 1 Year from Date of Manufacture.



### ITRS BASKET RADIAL REPAIR UNITS - UNCURED

UNCURED	DESCRIPTION	SIZE - INCHES / (MM)	WEIGHT/BOX	QTY/BOX
20-946	ITRS RSB165	5" x 16" (125x405)	6.4 LBS / 2.9 KG	5
20-950	ITRS RSB209	9" x 20" (230x510)	15.2 LBS / 6.9 KG	5
20-956	ITRS RSB2710	10" x 27" (255x685)	8.2 LBS / 3.7 KG	2
20-960	ITRS RSB3810	10" x 38" (255x965)	12 LBS / 5.5 KG	2



# ITRS RADIAL UNCURED REPAIR

## ITRS-K BASKET RADIAL REPAIR UNITS - UNCURED ITRS-K BASKET RADIAL REPAIR UNITS

These repairs are designed for use in severe service tires such as haulage where tires are subject to long hauls, larger injuries and overloaded conditions. They are made with Aramid cord to help prevent "radial bulge" and give additional support to the tire. Designed to be used in a non-flex to non-flex application. Shelf Life: 1 Year from Date of Manufacture.

UNCURED	DESCRIPTION	SIZE - INCHES / (MM)	QTY/BOX
20-951	ITRS RSB 5111	10-1/2" x 51" (265x1295)	2
20-957	ITRS RSB 5711	10-1/2" x 57" ( 265X1445)	2
20-963	ITRS RSB 6311	10-1/2" x 63" (265x1699)	2

## ITRS BASKET WIDE BASE - RADIAL REPAIR UNITS

This wider version of our ITRS-B repair unit provides an extra "grip area" where optimum adhesion is necessary. Suggested for severe usage tires such as haulage tires. Shelf Life: 1 Year from Date of Manufacture.

## ITRS BASKET WIDE BASE RADIAL REPAIR UNITS - UNCURED

UNCURED	DESCRIPTION	SIZE - INCHES / (MM)	QTY/BOX
20-816	ITRS RSB WB167	7" x 16" (175x405)	5
20-820	ITRS RSB WB2011	11" x 20" ( 280x510)	5
20-827	ITRS RSB WB2714	13-1/2" x 27" (340x685)	2
20-840	ITRS RSB WB4018	17-1/2" x 38" ( 455x965)	2

## ITRS-K BASKET WIDE BASE RADIAL REPAIR UNITS

A larger, wider version of the ITRS-K. They provide extra gripping area for the additional adhesion needed for larger repairs. Shelf Life: 1 Year from Date of Manufacture.

## ITRS-K BASKET WIDE BASE RADIAL REPAIR UNITS - UNCURED

UNCURED	DESCRIPTION	SIZE - INCHES / (MM)	QTY/BOX
20-851	ITRS RSB WB5118	17-1/2" x 51" (445x1295)	2
20-857	ITRS RSB WB5718	17-1/2" x 57" ( 445x1445)	2
20-863	ITRS RSB WB6318	17-1/2" x 63" (445x1600)	2

## CENTER TREAD ITRS RADIAL REPAIR UNITS

Radial Crown area repair units are designed to allow the technician to repair anywhere in the tread area. This design also allows the technician to repair tread areas closer to the shoulder than most other tread area repairs. These repair units must be used in a heat cure system such as an Autoclave, Section Mold, Molds or Strap Type Heat Curing system. Shelf Life: 1 Year from Date of Manufacture.

UNCURED	CLOTHBACK	HEAT URE	DESCRIPTION	SIZE - INCHES / (MM)	QTY/BOX
20-045	21-045	23-045	ITRS RC97	7-1/2" x 9" (190x230)	5
20-055	21-055	23-055	ITRS RC1310	10" x 13" (255x230)	5
20-065	21-065	23-065	ITRS RC1615	12" x 16" (305x405)	3
20-075	21-075	23-075	ITRS RC2117	17" x 21" (430x535)	3
20-085	21-085	23-085	ITRS RC 2923	22-1/2" X 29" (570X735)	1



# CUSHION GUM AND ROPE RUBBER

## EXTRUDER GUN CLEAN OUT ROPE

CODE	DESCRIPTION	WEIGHT
50-994	Extruder gun Clean out rope - 10' rope	3 Kg



## ROPE RUBBER

Use to build reinforced repairs to tires, conveyor belting.

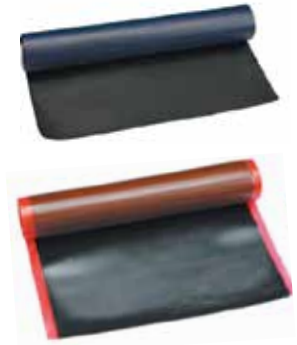
CODE	DESCRIPTION	DIAMETER	CURE RATE	SHELF LIFE	WT/BOX
26-122	XR-38 / EXTRUDER ROPE	3/8" - (95MM)	RTT-10	4 MO. FROM SHIP DATE	30lbs
26-116	OTR ROPE	3/8" - (95MM)	RTT-10	6 MO. FROM SHIP DATE	30lbs
26-118	TR-38 / TREAD ROPE	3/8" - (95MM)	RTT-10	6 MO. FROM SHIP DATE	30lbs



## REPAIR CORDS

Use to build reinforced repairs to tires, conveyor belting.

CODE	DESCRIPTION	SIZE (W & THICK)	CURE RATE	SHELF LIFE	WT/BOX
26-007	NYLON TIRE CORD	29" x 3/64" (735x0.40MM)	RTT-50	1 YEAR	20lbs
26-001	NYLON SQUARE WOVEN	29" x 1/16" (735x1.50MM)	RTT-50	1 YEAR	20lbs



## CUSHION GUM

Natural Rubber compound with excellent tack and workability. For fill buzz-outs over exposed cords, spot repairs or reinforce repairs and section repairs.

CODE	DESCRIPTION	SIZE (W & THICK) - INCHES / (MM)	CURE RATE	SHELF LIFE	WT/BOX
26-222	STRIPPING STOCK	1" x 1/16" (25x1.50)	RTT-35	1 YEAR	25lbs
26-223	STRIPPING STOCK	2" x 1/16" (50x1.50)	RTT-35	1 YEAR	25lbs
26-202	CUSHION GUN	18" x 1/64" (455x0.40)	RTT-35	1 YEAR	10lbs
26-198	CUSHION GUN	2" x 1/32" (50x0.80)	RTT-35	1 YEAR	30lbs
26-191	CUSHION GUN	4" x 1/32" (100x0.80)	RTT-35	1 YEAR	25lbs
26-193	CUSHION GUN	6" X 1/32" (150X0.80)	RTT-35	1 YEAR	25lbs
26-201	CUSHION GUN	18" x 1/32" (455x0.80)	RTT-35	1 YEAR	10lbs
26-207	TREAD GUM	18" x 1/16" (455x1.50)	RTT-35	1 YEAR	10lbs
26-200	CUSHION GUN	18" x 1/16" (455x1.50)	RTT-35	1 YEAR	10lbs
26-156	BUTYL REPAIR GUM	18" x 1/16" (455x1.50)	RTT-40	1 YEAR	10lbs
26-150	FLOATER GUM	18" x 1/8" (455x3.00)	RTT-35	1 YEAR	10lbs

## CURE RATES

Use to build reinforced repairs to tires, conveyor belting. Cure rate: 30min/280F 50min/260F

RTT-10	RTT-35	RTT-40	RTT-50
20' @ 260F; 10' @ 280F	35' @ 260F; 20' @ 280F	40' @ 260F; 20' @ 280F	50' @ 260F; 30' @ 280F



## CHEMICAL FLUIDS

### CHEMICAL VULCANIZING CEMENT

CODE	DESCRIPTION	SIZE	QTY/BOX
ITRS FAST DRY SELF VULCANIZING CEMENT			
25-078	ITRS Fast Dry Cement (flamable)	8 oz. / 237 ml	24
25-071	ITRS Fast Dry Cement (flamable)	32 oz. / 926 ml	12
ITRS FAST DRY SELF VULCANIZING CEMENT (NON FLAMABLE)			
25-468	ITRS Fast Dry Cement (non flamable)	8 oz. / 237 ml	24
25-461	ITRS Fast Dry Cement (non flamable)	32 oz. / 926 ml	12
ITRS BLUE SELF VULCANIZING CEMENT			
25-178	ITRS BLUE Cement (flamable)	8 oz. / 237 ml	24
25-171	ITRS BLUE Cement (flamable)	32 oz. / 926 ml	12
ITRS BLUE SELF VULCANIZING CEMENT (NON FLAMABLE)			
25-478	ITRS BLUE Cement (non flamable)	8 oz. / 237 ml	24



### RUBBER CLEANER

DISSOLVES LUBRICANTS AND CONTAMINANTS PRIOR TO BUFFING.

CODE	DESCRIPTION	SIZE	QTY/BOX
25-316	ITRS Rubber Cleaner (flammable)	16 oz. / 474 ml	12
25-301	ITRS Rubber Cleaner (flammable)	32 oz. / 926 ml	12

### INNER LINER SEALANT

RESTORES THE AIR RETENTION QUALITIES TO THE OVERBUFF AREA.

CODE	DESCRIPTION	SIZE	QTY/BOX
25-918	ITRS Black Liner Sealant (flam-)	8 oz. / 237 ml	24
25-916	ITRS Black Liner Sealant (flam-)	16 oz. / 474 ml	12

### BEAD SEALER

FORMS AN AIRTIGHT SEAL BETWEEN THE TIRE AND RIM.

CODE	DESCRIPTION	SIZE	QTY/BOX
25-148	ITRS Rim Sealant (Flammable)	8 oz. / 237 ml	24
25-141	ITRS Rim Sealant (Flammable)	32 oz. / 926 ml	12

### FIBER BOND CEMENT

AVAILABLE IN SPRAY OR BRUSH TYPE FOR RETREADING AND REPAIRING.

CODE	DESCRIPTION	WEIGHT	SIZE
25-062	Spray Type Cement	45 lbs	5 gallons / 19 L
25-063	Brush Type Cement	45 lbs	5 gallons / 19 L
25-835	Brush Type Cement (non flamable)	59 lbs	5 gallons / 19 L



### RUBBER SOLVENT

CODE	DESCRIPTION	WEIGHT	SIZE
25-845	Rubber Solvent	45 lbs	5 gallons / 19 L

